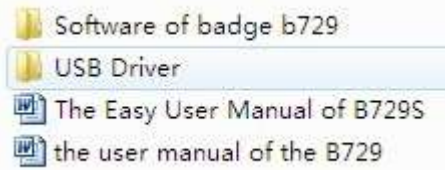
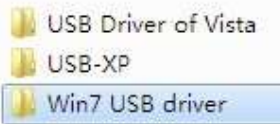


## bhi LED Message Badges Quick Install Guide to Programming Badges on a PC

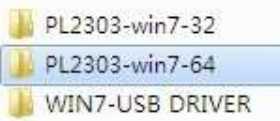
First, Put the CD into your computer CD drive. Locate the file USB Driver and open it.



Choose the operating system which matches your computer



for example your computer system is win7-64, then, please open this file



Then, run it and install it. After the installation you should see:

PL2303\_Prolific\_DriverInstaller\_10311

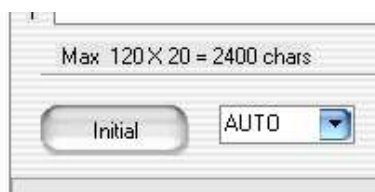
Next, connect the badge to USB cable and USB/serial converter, and then connect the USB to your compute. After it is connected to the computer, a message "already found the new hardware" appears on the right corner of computer's screen, at this moment, please open the file "Software of badge b729"



Open the badge 31 software and enter the message/messages you want to display



Choose the port "AUTO" is ok.



After entering the message text into the badge, click "send", wait 2 to 3 seconds, the message should now show in the badge. Remove USB and switch badge on and off.